

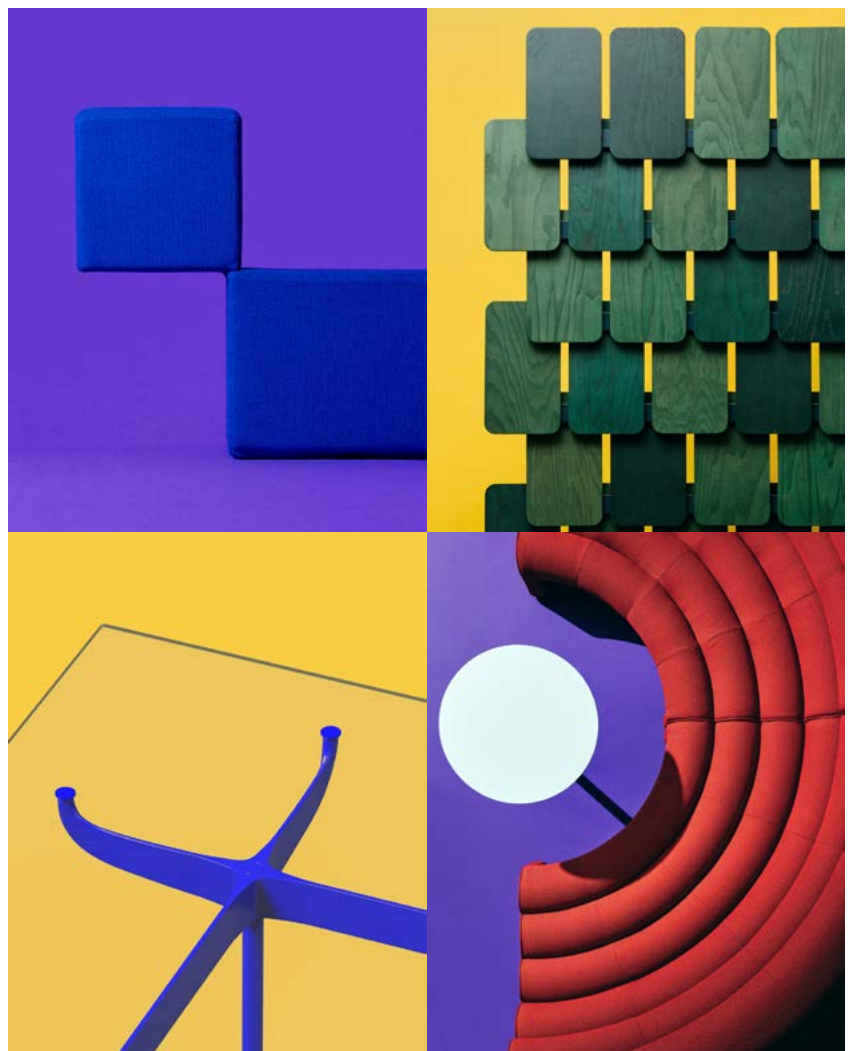


Press Kit
bit.ly/NII_MDW26

Press Release

Salone del Mobile.Milano
Hall 22 - Booth A27
Rho Fiera
21-26 April, 2026

NII



NII – INGENIOUS DESIGN

**Japanese Design Brand Nii to Showcase Its
Work at Salone del Mobile.Milano 2026**



March 2026 – **NII**, a Japanese office furniture brand, has chosen **Salone del Mobile.Milano 2026** as the stage for its first presentation outside Japan.

The brand was born within **ITOKI Corporation**, founded in 1890 and active for over 130 years in the design of furniture and workspaces in Japan. Guided by the mission “We Design Tomorrow. We Design Work-Style.”, ITOKI has developed a long-standing vision centered on the evolution of work and its environments.

From April 21 to 26, at Pavilion 22 – Booth A27, NII opens a dialogue with the global design community, presenting designs across four series designed by **AMD L CIRCLE, Todd Bracher, Rodolfo Agrella, and Jun Aizaki / CRÈME**.

At the exhibition, NII will present designs previously introduced in Japan, alongside new designs for 2026, including works by Industrial Facility, offering an early preview of the upcoming series.



Ingenious Design: Furniture that Cultivates Creativity and Imagination

Workspaces take shape through relationships, movement, and evolving possibilities.

NII interprets this transformation through its concept of **Ingenious Design**, developing furniture that supports communication, collaboration, and imagination in shared environments. The collection embraces flexibility and dynamic configurability, creating spatial frameworks that encourage interaction and collective exchange.

Under the creative direction of **Hiroataka Tako**, NII extends ITOKI’s legacy – encapsulated in the principle “AI x Design Based on PEOPLE” – translating it into a design research approach focused on human experience within public space.



BITMAP | Design by Todd Bracher

BITMAP is a reflection on flexibility, play, and the ways we inhabit space.

The piece is composed of two rectangular volumes — one larger, one smaller — fused along one edge. Where the smaller block meets the main volume, the balance becomes unexpected and the form appears almost suspended. The smaller block functions as a side table, armrest, or additional seat, accessible from all sides. Although conceived as a single element, multiple pieces can be combined to create modular compositions, encouraging communication in multiple directions — side-by-side, face-to-face, or diagonally.

DESIGNER'S COMMENT

“BITMAP challenges the way we think about lounge seating. Instead of dictating how people should sit or gather, it creates an open framework for exploration. The modular, pixel-like forms can be nested, stacked, or arranged in unexpected ways—allowing users to shape their space intuitively. The elevated perch adds another layer of function, acting as both a seat and a surface for work or interaction. By removing the rigid structure of traditional seating, Bitmap encourages a more natural, adaptable way to engage with space—whether alone or in a group. It’s about flexibility, play, and rethinking how we inhabit our environments.”

Todd Bracher

Todd Bracher is an industrial designer and design strategist. His approach draws on his experiences living and working in Copenhagen, Milan, Paris, London, and New York, integrating diverse cultural perspectives with practical design solutions. Named a Top Global Design Influencer by Wallpaper* Magazine and a recipient of multiple Designer of the Year awards, his work balances art and functionality, drawing on science, nature, and mathematics to create enduring solutions. He partners with some of the world’s leading brands, including 3M, Burberry, Cappellini, Herman Miller, Humanscale, Issey Miyake, Jaguar, and the City of New York. With over 200 products in the market, two dozen patents, and more than 40 design awards, Bracher brings contemporary solutions to a wide variety of industries, from furniture, and beauty to technology and science.



Photo: Jean-Claude Cancedda



CONNEXA | Design by Rodolfo Agrella

CONNEXA interprets the table as an infrastructure for conversation.

Its structural framework defines its organic character and supports transparent glass tops through a series of contact points, leaving the structure visible as a defining feature of the project. The composition is essential, and the system allows unlimited combinations and expansions through four different glass tops and five frame types, connected via dedicated connectors that ensure continuity and stability. The design recalls biophilic forms, while its discreet presence invites gathering and dialogue.

DESIGNER'S COMMENT

"CONNEXA is a playful and poetic approach to gather around a table for sharing ideas. The levitating structure ignites the power of conversations as its graphic and organic shape evokes both nature's forms and the human skeleton, while presenting itself as crisscross components that enable the full system to be extended. The clear top, a lake when independent, a river when connected, is visibly splashed by the structural supports in the shape of dots that recall blooming water lilies. All poetry to enable human connections and fluidity in residential, hospitality and workplace fields."

Rodolfo Agrella

Rodolfo Agrella is a designer and architect, and creative director of his eponymous design studio RADS. His work has received international acclaim, including a Special Mention at the German Design Award, the Hublot Design Prize, and the NYCxDESIGN Awards, and is included in the Collezione Permanente at the Salone del Mobile in Italy. He has worked with many international brands such as Absolut, Koziol, WeWork, Juniper Lighting, 3M, ICFE, Bernhardt Design, Steinway & Sons, Heller, NKBA, and Untitled Art. Agrella's work mingles his native Latin American flair with contemporary European and American codes to form a vibrant creative language.

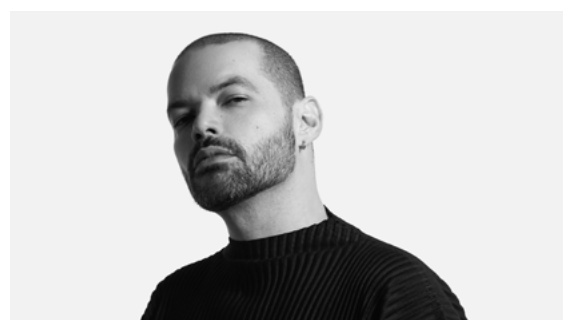


Photo: Francisco Fernandez



PIGNA | Design by AMDL CIRCLE – Michele De Lucchi

PIGNA articulates space through two elements: a divider and a sofa. The shingle-like panels gently screen the seating area, shielding it from view while still allowing light and air to filter through. The collection is available in three configurations, calibrated to different levels of privacy: Low, with a height that preserves the perception of the surrounding environment; Middle, which reinforces a sense of enclosure; and High, offered exclusively as a divider, providing more defined screening. The seating, wider than standard, ensures comfort. Together, the elements create a space that welcomes and protects, fostering communication within while maintaining a relationship with the outside environment.

DESIGNER'S COMMENT

“PIGNA is a modular system that reinterprets the wooden shingle, a distinctive element of AMDL CIRCLE's design language. By defining pathways, creating scenic backdrops, or enclosing informal spaces, the divider shapes spaces and atmospheres. The walls form a «U» shape, embracing the sofa. The result is a welcoming micro-architecture, ideal for workspaces and conversation areas. Individual elements can be freely arranged to create pathways, rest areas, or decorative partitions. PIGNA is a dynamic, ever-evolving system: a new way of shaping work and social spaces.”

ADML CIRCLE

ADML CIRCLE is a multidisciplinary studio in Milan, founded by Michele De Lucchi. Combining a humanistic and interdisciplinary approach, the studio offers its clients projects that embrace architecture, interior design, product design, and graphics. It carries out continuous research on the future of architecture and its responsibility to imagine projects that not only acknowledge change, but also inspire it. The studio has worked with major corporations such as Deutsche Bank, Intesa Sanpaolo, Novartis, and UniCredit, and has designed buildings and exhibition systems for institutions such as the Neues Museum in Berlin, the Triennale Milano, and the Gallerie d'Italia in Milan, Turin, and Naples. The studio has also designed lighting, products, and furniture for Alessi, Artemide, Cassina, Hermès, Poltrona Frau, and UniFor.





PARLAMENTO | Design by Jun Aizaki / CRÈME

PARLAMENTO interprets modularity as a space of continuous connection.

The system consists of four units of varying heights, designed to generate configurations that encourage interaction among multiple users. Sofas and tables, available in both low and high versions, evoke water ripples and organic morphologies through flowing, curvilinear forms that define space with fluidity. Designed according to ergonomic principles, the elements facilitate interaction and information exchange in every direction and from any position. Flexible configurations create spatial continuity not only in meeting rooms, but also in reception areas and shared environments, where hospitality plays a central role.

DESIGNER'S COMMENT

"PARLAMENTO is inspired by the sculptural forms and inviting comfort of 1970s lounge seating. Blending the sensibilities of hospitality and workplace environments, the design offers a versatile and dynamic approach to seating that adapts to the fluidity of modern workspaces. With a wide range of configurations and premium materials playing an important role in distinguishing this collection, PARLAMENTO achieves a level of sophistication not typically found in modular furniture. Designed for the way we gather, work, and connect today, it is a system that feels at home in both professional and hospitality settings—fluid, inviting, and effortlessly modern."

Jun Aizaki

Jun Aizaki is an architect, the owner and principal of CRÈME, a creative design studio based in New York. In the hospitality industry, he has worked with high-profile clients including Starwood Hotels & Resorts, Hyatt Hotels Corp., InterContinental Hotels Group, Highgate, Marriott and Gerber Group. In addition, he designed the master plan and renovation of two floors of the Kimpton Hotel Eventi in New York and completed a full interior design and branding of the Hyatt Centric Center City in Philadelphia. The firm has also completed projects for iconic venues such as Redfarm, L'Amico and Mr. Purple.





Press enquiries:

Moosso – Strategic PR and Communication
team@moossopr.com t. +39.02.3675.1875

Press Kit:

bit.ly/NII_MDW26

Brand Name: NII
Items: Office Furniture
Creative Director: Hirotaka Tako /ITOKI
Designer: AMDLCIRCLE
Todd Bracher
Rodolfo Agrella
Jun Aizaki /Crème
Details regarding Industrial Facility will be
announced at a later date
Sito Web <https://www.nii-ingenious.com>
Instagram: @nii.design.official
Planning, Production, Sales: ITOKI CORPORATION

About ITOKI CORPORATION

ITOKI CORPORATION was founded in 1890. With the mission statement of “We Design Tomorrow. We Design Work-Style.” ITOKI manufactures and sells office furniture, designs office spaces, consults on work styles and provides office data analysis, among other services. The company’s strengths in “AI × Design Based on PEOPLE” support the creation of various spaces, environments and places with a range of furniture for working and studying at home, as well as equipment for public and logistical facilities. With the growth of hybrid work and increasingly diverse places and ways of working, ITOKI provides spatial digital transformation services to boost productivity and creativity, along with consulting on the optimal operation of office spaces. The company also collaborates with designers and partner companies to propose new work styles and workplaces for the future.