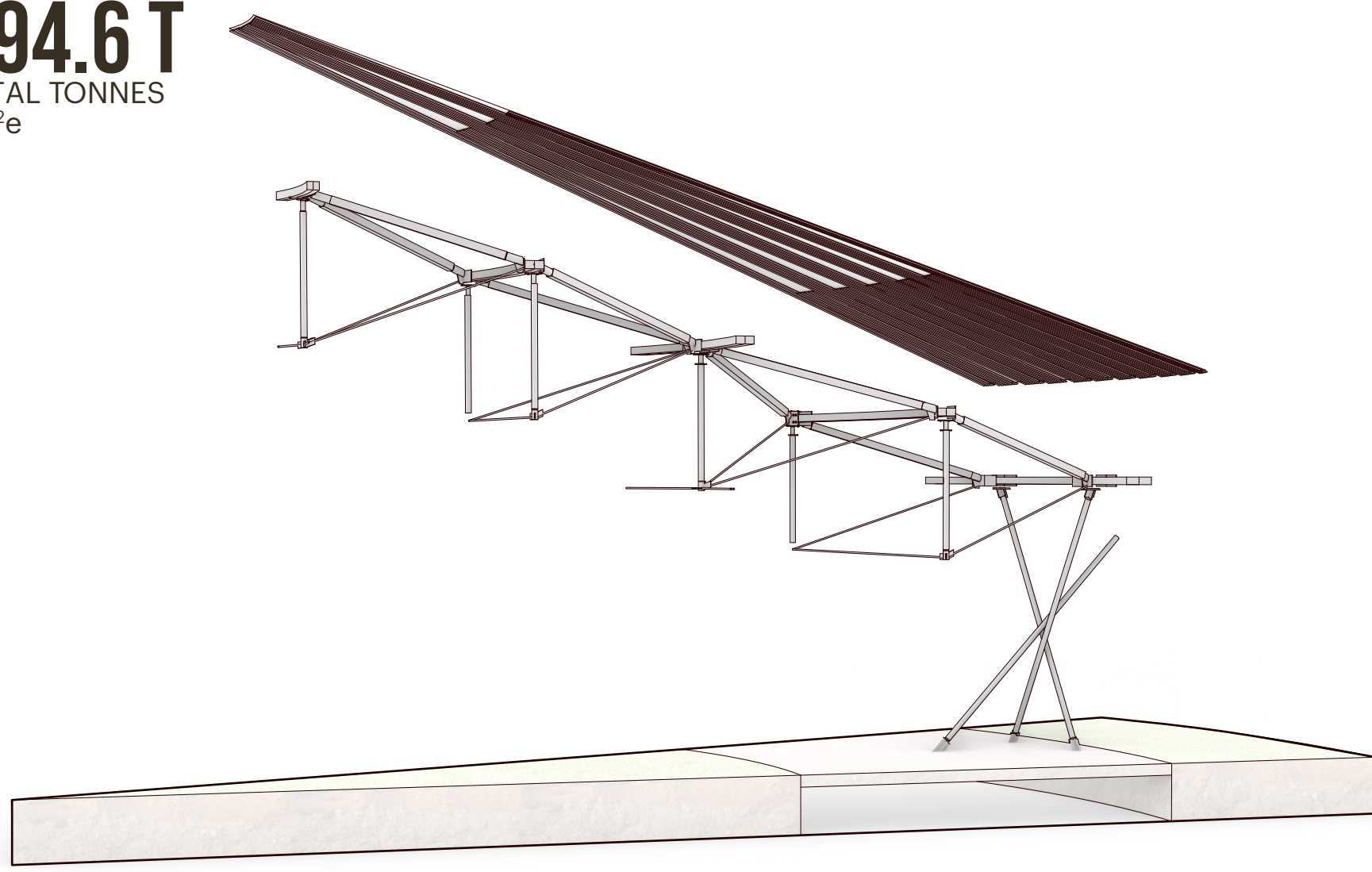


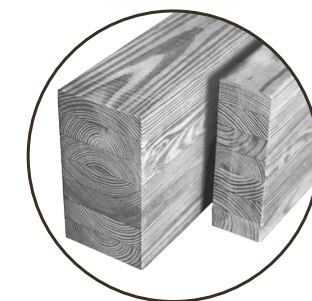
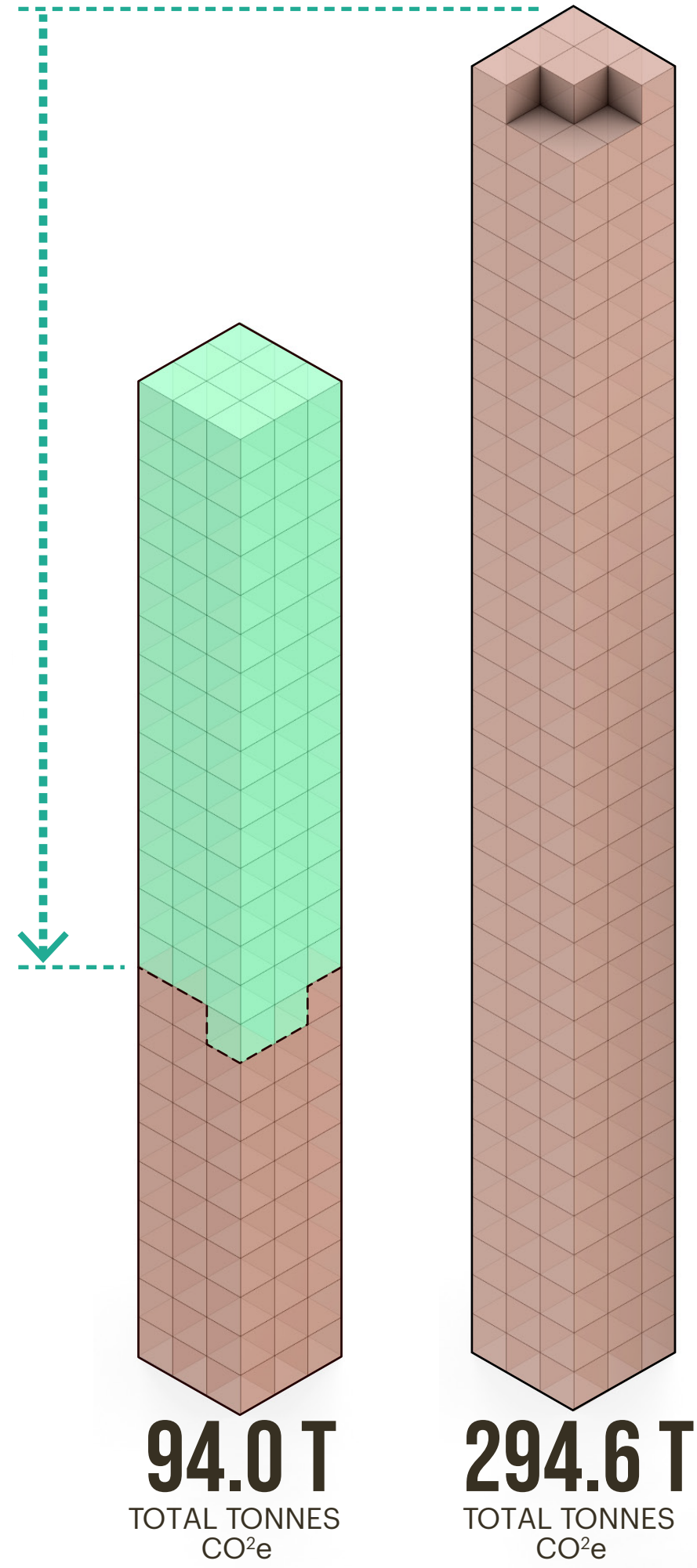
STEEL STRUCTURE

294.6 T
TOTAL TONNES
CO²e



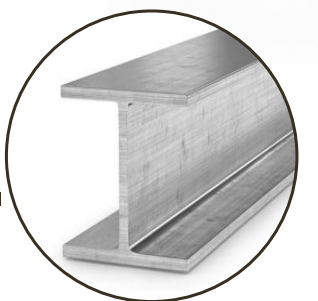
68.1%

TOTAL REDUCTION IN CO²e WITH BIOGENIC CARBON STORAGE



HEAVY TIMBER
ROOF ASSEMBLY

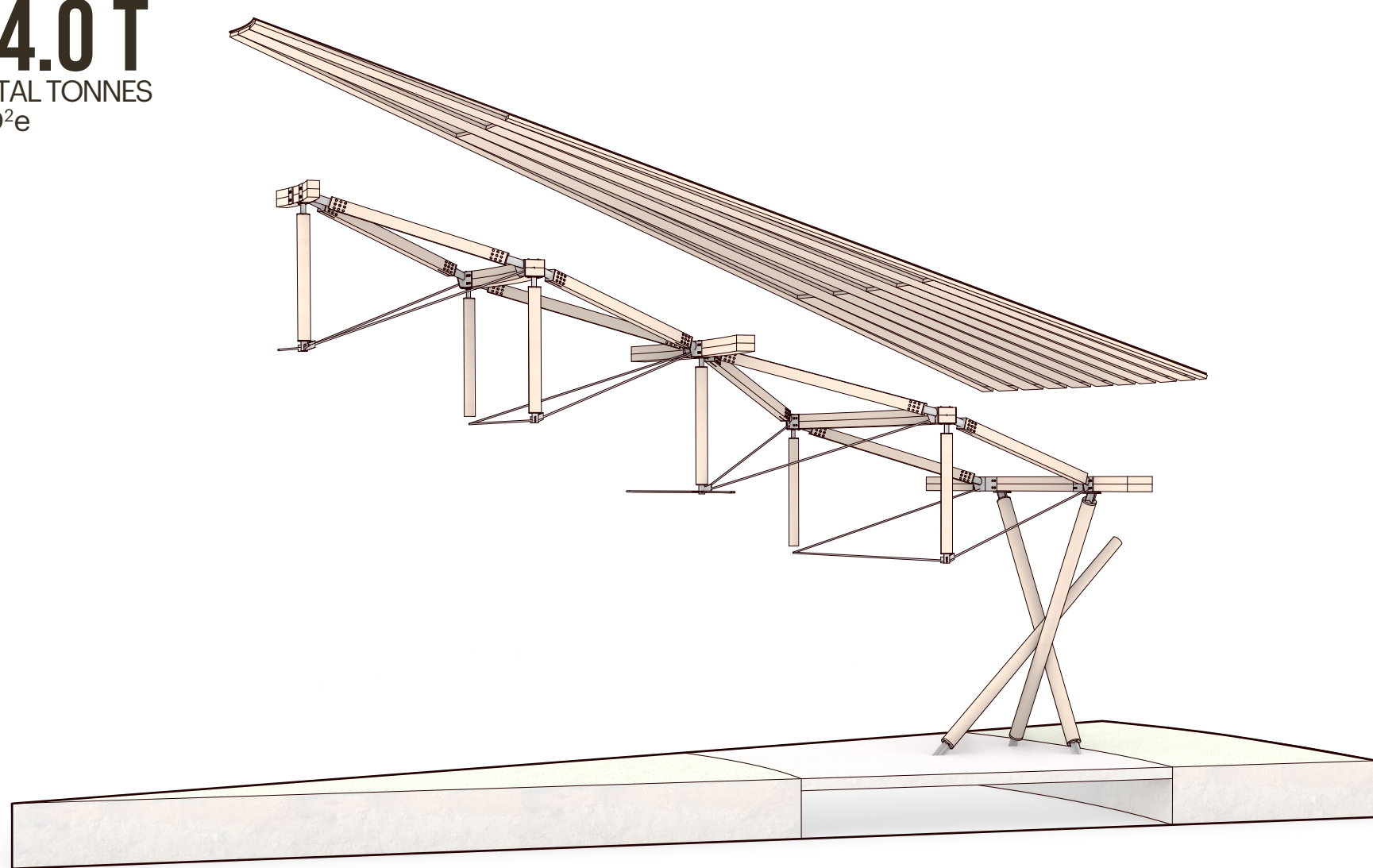
VS.



STRUCTURAL STEEL
ROOF ASSEMBLY

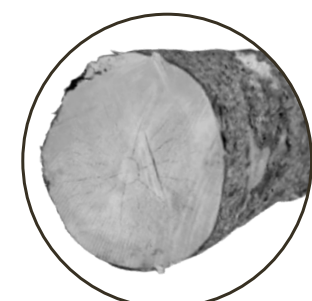
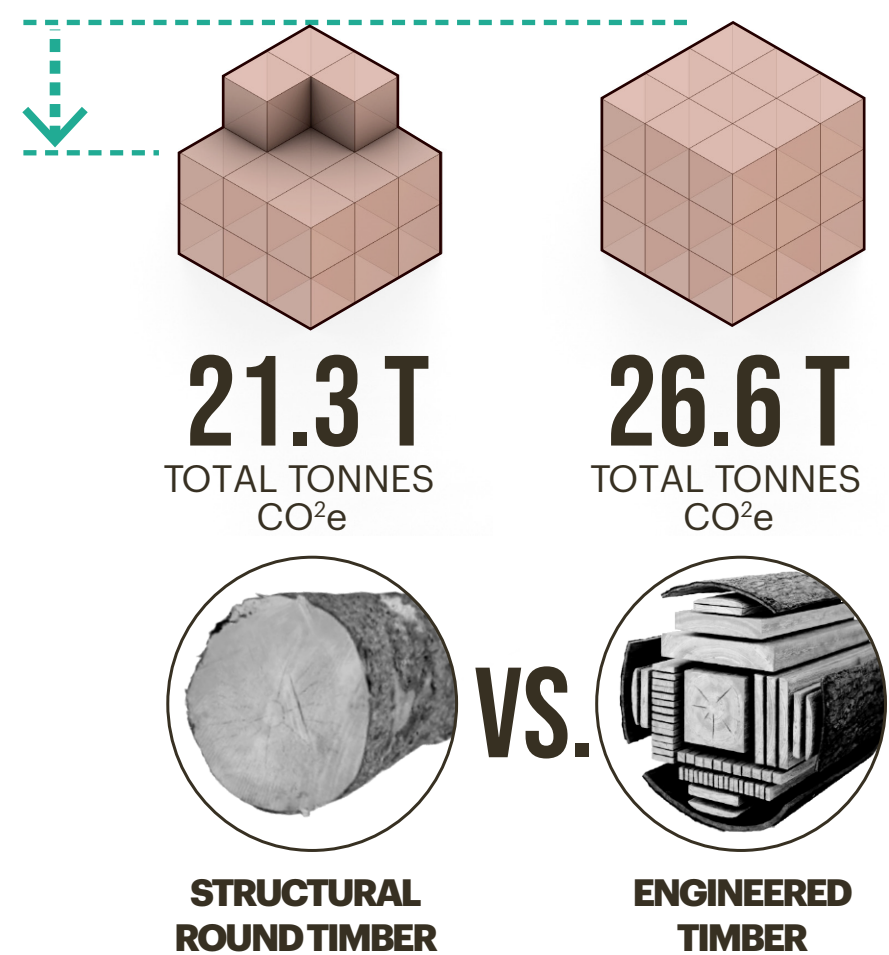
HEAVY TIMBER

94.0 T
TOTAL TONNES
CO²e



20.0%

TOTAL REDUCTION IN CO²e WITH BIOGENIC CARBON STORAGE



STRUCTURAL
ROUND TIMBER

VS.



ENGINEERED
TIMBER